



Refrigerator Freezer

USER MANUAL

FF1550B

FF1550W

FF1550S

Dear customer:

Thank you for buying this refrigerator-freezer. To ensure that you get the best results from your new refrigerator-freezer, please take time to read through the simple instructions in this booklet.

Please ensure that the packing material is disposed of in accordance with the current environmental requirements.

When disposing of any refrigerator-freezer equipment please contact your local waste disposal department for advice on safe disposal.

This appliance must be only used for its intended purpose.

CAUTION :

The appliance is not intended for use by young children without supervision.

Young children should be supervised to ensure that they do not play with the appliance.

General:

This type of refrigerator-freezer is widely used in places such as hotels ,offices, student dormitories and houses. It is mostly suitable for refrigerating and preserving foods such as fruits and beverages. It benefits the advantages of small size, lightweight, low electric consumption and easy use.

Warning:



Warning: risk of fire / flammable materials

RECOMMENDATIONS

This appliance is intended to be used in household and similar areas such as staff kitchen areas in shops, offices and other working environments; farm houses and by clients in hotels, motels and other residential type environments. This appliance is not intended for the commercial industry.

Children should be supervised to ensure that they do not play with the appliance.

If the supply cord is damaged, it must be replaced by the manufacturer, its service agent or similarly qualified persons in order to avoid a hazard.

Do not store explosive substances such as aerosol cans or flammable liquids in this appliance.

The appliance has to be unplugged after use and before carrying out user maintenance on the appliance.

WARNING: Risk of fire / flammable materials.

WARNING: Keep ventilation openings, in the appliance enclosure or in the built-in structure, clear of obstruction.

WARNING: Do not use mechanical devices or other means to accelerate the defrosting process, other than those recommended by the manufacturer.

WARNING: Do not damage the refrigerant circuit.

WARNING: Do not use electrical appliances inside the food storage compartments of the appliance, unless they are of the type recommended by the manufacturer.

WARNING: Please dispose of the refrigerator in accordance to the local regulation.

WARNING: When positioning the appliance, ensure the supply cord is not trapped or damaged.

WARNING: Do not use multiple portable socket-outlets or portable power supplies at the rear of the appliance.

Do not use extension leads or three pronged plug adapters.

DANGER: Risk of child entrapment. Before you throw away your old refrigerator or freezer:

-Take off the doors.

-Leave the shelves in place so that children may not easily climb inside.

The refrigerator must be disconnected from the source of electrical supply before attempting the installation of any accessories.

Refrigerant and cyclopentane foaming material used for the refrigerator are flammable. Therefore, when the refrigerator is scraped, it shall be kept away from any fire source and be recovered by a special recovering company with corresponding qualification other than be disposed by combustion, so as to prevent damage to the environment or any other harm.

For EN standard: This appliance can be used by children aged from 8 years and above and persons with reduce physical sensory or mental capabilities or lack of experience and knowledge if they have been given supervision or instruction concerning use of the appliance in a safe way and understand the hazards involved. Children shall not play with the appliance. Cleaning and user maintenance shall not be made by children without supervision.

For IEC standard: This appliance is not intended for use by persons (including children) with reduced physical, sensory or mental capabilities, or lack of experience and knowledge, unless they have been given supervision or instruction concerning use of the appliance by a person responsible for their safety.)

PLEASE CHECK APPLIANCE IS WORKING THOROUGHLY AND IS NOT DAMAGED BEFORE USAGE

**IF THERE ARE ANY PROBLEMS WITH THE APPLIANCE OR YOU HAVE ANY CONCERNS
PLEASE CONTACT THE TEKNIX SERVICE DEPARTMENT ON 01759 487823**



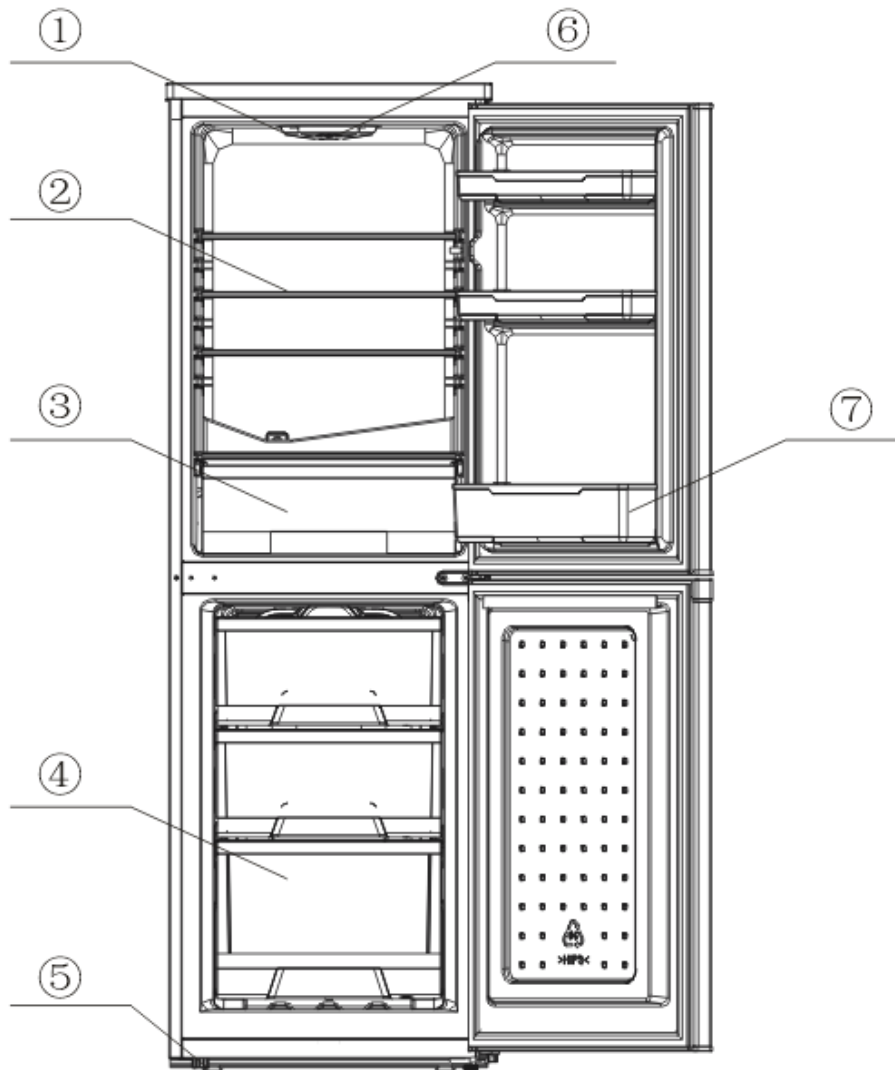
**Your Teknix appliance comes with a 2 year parts and
labour guarentee**

**Please register your appliance online at
www.teknixwarranty.co.uk**

**You also have the option to EXTEND YOUR WARRANTY to 5 years parts
and labour**

Please call 01759 487823

Main configuration:



- 1、 Refrigerator lamp
- 2、 Glass shelf
- 3、 Crisper
- 4、 Freezer drawer
- 5、 Adjustable foot
- 6、 Thermostat
- 7、 Refrigerator tray

UNPACKING YOUR REFRIGERATOR-FREEZER

WARNING: Use two or more people to move refrigerator-freezer. Failure to do so can result in back or other injury.

Remove tape and any labels from your refrigerator-freezer before using (except the rating label).

To remove any remaining tape or glue, rub the area briskly with your thumb.

Tape or glue residue can also be easily removed by rubbing a small amount of liquid dish soap over the adhesive with your fingers. Wipe with warm water and dry.

Do not use sharp instruments, rubbing alcohol, flammable fluids, or abrasive cleaners to remove tape or glue. These products can damage the surface of your refrigerator-freezer.

When moving the refrigerator-freezer, do not tilt the refrigerator-freezer beyond 45° from upright position.

CLEANING BEFORE USE:

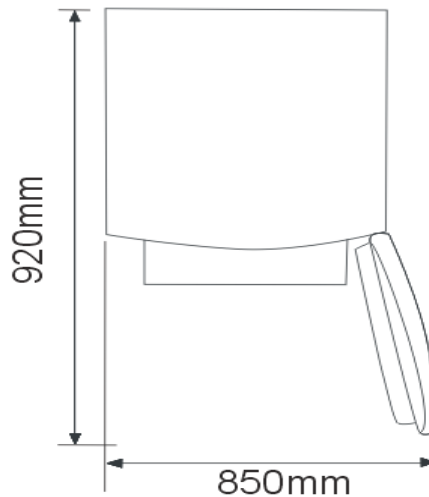
After you remove all of the packaging materials, (especially the foam between outside condenser and cabinet should be removed) clean the inside of your refrigerator-freezer before using it.

Failure to do so can result in death, explosion, fire or burns.

To ensure proper ventilation for your refrigerator-freezer, allow for 200mm space on each side between walls, 200mm space between back of your refrigerator-freezer and the wall, and 300mm space between counter top and the roof or ceiling.

If you are installing your refrigerator-freezer next to a fixed wall, leave sufficient space on the hinge side to allow for the door to swing open.

Never install your refrigerator-freezer near heat source and direct sun light. The dimensions of refrigerator are shown in the figure below



ELECTRICAL REQUIREMENT

WARNING: DO NOT REMOVE GROUND PRONG.

DO NOT USE AN ADAPTOR.

DO NOT USE EXTENSION CORD.

Failure to follow these instructions can result in death, fire or electrical shock.

Before you move your refrigerator-freezer into its final location, it is important to make sure you have the proper electrical connection.

Recommended Earthing Method

A 220~240 Volt /50 Hz AC only a10 amp fuse and properly earthed electrical supply is required. It is recommended that a separate circuit serving only this

appliance be provided.

NOTE: Before performing any type of installation, disconnect the refrigerator-freezer from the electrical source. When you are finished, connect the refrigerator-freezer to the electrical source and reset the control to the desired setting.

LEVELLING

If the refrigerator-freezer is not leveled during installation. The doors may not close or seal properly, causing cooling, frost or moisture problems. It is very important of the refrigerator-freezer to be level in order to function properly. To level your refrigerator-freezer you may either turn the leveling feet clockwise to raise that side to the refrigerator-freezer or turn counter – clockwise to lower that side.

NOTE: Have someone push against the top of the refrigerator-freezer to take some weight off the leveling leg. This makes it easier to adjust the leveling foot.

USE OF THE APPLIANCE

To obtain the best possible results form your refrigerator-freezer, it is important that you operate it properly.

Temperature Control

The temperature in the refrigerator-freezer is controlled by the thermostat control knob. The thermostat control box is located in compressor compartment. Turn the thermostat control knob up or down to regulate the temperature inside the refrigerator-freezer. The markings on control knob indicated the “1~7” for the

different temperature grades. The temperature decreases with position “1” being the warmest and position “7” being the coldest. The letter “0” stops this from working. Set the control to position between “1” and “7” for normal use, the exact position is dependent on your desired temperature however, the average household uses position "4".

CHANGING THE BULBS

·Unplug the refrigerator or disconnect refrigerator from the power supply before you remove the bulb.

· Replace the bulb with 15-watt appliance bulb. Not all bulbs will fit your refrigerator.

Be sure to replace the bulb with one of the same size and shape.

·Plug in refrigerator or reconnect refrigerator to power supply.

· Any replacement or maintenance of the LED lamps is intended to be made by the manufacturer, its service agent or similar qualified person.

Fresh Food Storage

Wrap or store food in the refrigerator in airtight and moisture – proof material.

This prevents food odor and taste transfer throughout refrigerator.

- Fruit – wash, let dry and store in refrigerator in plastic bags or crisper.
- Leafy vegetables- Remove wrapping and trim or tear off bruised and discolored areas. Wash in cold water and drain. Place in a plastic bag or plastic container and place in crisper.
- Fish –Use fresh fish the same day as purchased.
- Meat – Store most meat in original wrapping as long as it is airtight and moisture – proof.

Re – wrap if necessary.

- Leftovers – Cover leftovers with plastic wrap or aluminum foil. Plastic containers with tight lid can also be used.

Store Frozen Food

When using the refrigerator-freezer for the first time or after defrosting, turn the temperature control to set “7” for at least two hours before introducing the food to be stored.

All frozen food products you purchase should be placed in the freezer compartment as soon as possible to avoid the frozen food from defrosting.

Storage recommendation printed on the packaging of frozen food by the manufacturers should be always be followed.

Freezing Fresh Food

Ensure that your freezing processes are carried out under the most hygienic conditions as freezing alone does not sterilize the food. It is advisable to freeze the food by packing it into separate meal portions and not in bulk form. Never put hot or even warm food items into the freezer compartment. Prior to storing the frozen food, pack it in plastic bags, aluminum sheets or freezing containers and place into the freezer compartment. See the data plate on the back of the refrigerator-freezer for the maximum capacity amount in kilograms of fresh food that can be frozen in any 24 hour period with a room temperature of 25°C. Never freeze more than the maximum capacity.

Note: Never put bottled food or drinks in the freezer compartment.

For the best performance, leave enough space in the Freezer compartment for air to circulate around the packages.

Defrosting

Refrigerator compartment – Defrosting process is automatic by thermostat knob. Melted frost flows into drip tray and evaporates automatically.

Freezer compartment – Defrosting for the freezer compartment is by manual process.

- Turn the thermostat knob to set at **OFF** position and leave open the freezer door.
- Remove all foods, ice cube tray and shelf or transfer to refrigerating compartment.
- Clean and wipe out the melted frost with a cloth.

Cleaning your refrigerator-freezer

Before you start to clean your refrigerator-freezer, remove the mains plug from the power supply.

Use a clean sponge or soft brush and a mild detergent in warm water. Do not use abrasive or harsh cleaners.

Hand wash, rinse and dry all surfaces thoroughly.

Do not use cleaning waxes, concentrated detergents, bleaches or cleaners containing petroleum on plastics and rubber parts.

Never use paper towels, window sprays, scouring cleansers or flammable fluids on plastic parts as these can scratch or damage the material.

Clean with a cloth soaked in this solution and then dry with a soft cloth.

PROLONGED OFF PERIODS

If the refrigerator-freezer is not in use for a long period of time, proceed as follows:

Disconnect the refrigerator-freezer from the main supply by removing the plug from the wall socket.

Clean and dry the inside as instructed under the heading of cleaning the refrigerator-freezer.

Leave the door open to prevent any unpleasant smells from building up while the refrigerator-freezer is not in use.

TROUBLE SHOOTING

In case of malfunction, you can solve many common problems easily.

Your refrigerator-freezer will not operate...Check if

- The power supply cord is unplugged.

The doors will not close completely...Check if

- The drawers are out of position.
- The gaskets are dirty.
- The refrigerator-freezer is not level.

The refrigerator-freezer is noisy when running...Check if

- Check the refrigerator-freezer is level and it is not in contact with another appliance or kitchen furniture.

The refrigerator-freezer does not cool sufficiently...Check if

- If the door has been opened too often, or it has been left open for a while it will take time for the refrigerator-freezer to reach its set temperature.
- Check the airflow the rear of the refrigerator-freezer has not been reduced due to insufficient clearance.

The following characteristics should not be looked upon as a problem.

- A gentle tricking sound caused by coolant flowing the pipe.

Compressor operating at high temperature.

REQUESTING ASSISTANCE OR SERVICE

If the problem is not due to one of the items listed in Troubleshooting, Contact the Teknix Service Department on 01759 487823.

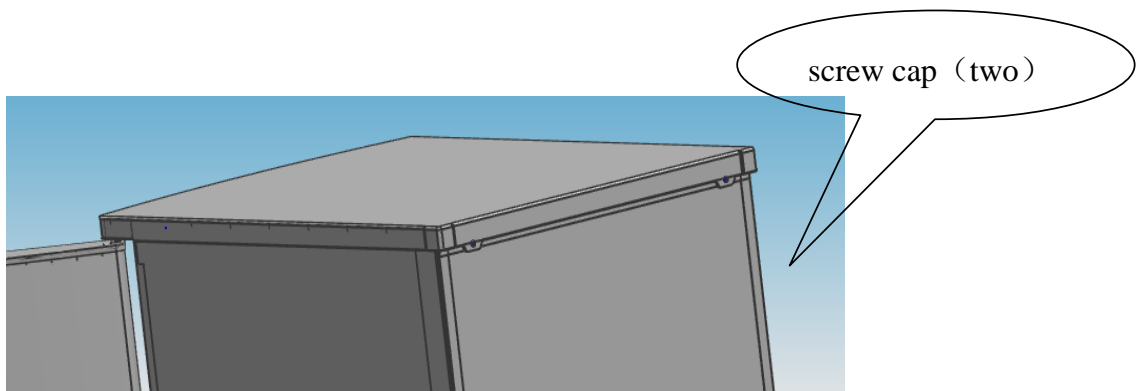


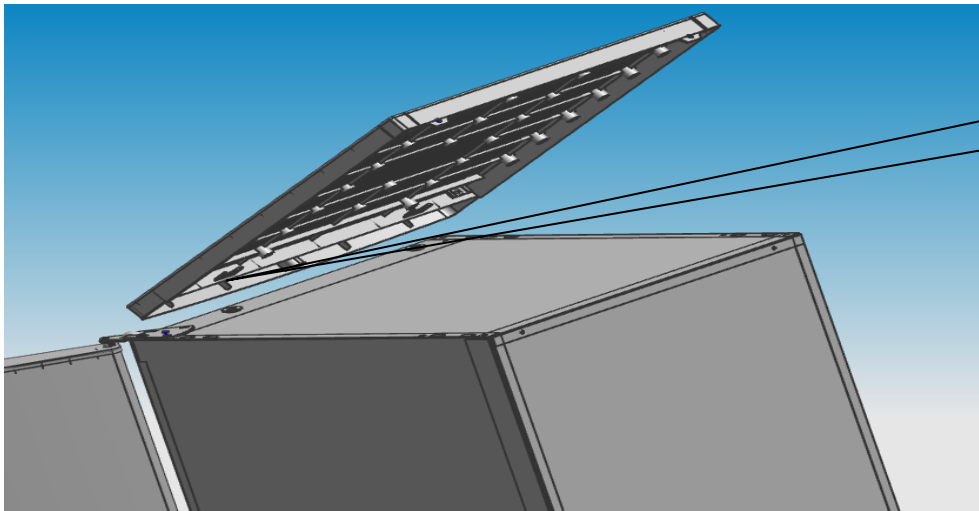
Correct Disposal of this product:

This marking indicates that this product should not be disposed with other household wastes throughout the EU. To prevent possible harm to the environment or human health from uncontrolled waste disposal, recycle it responsibly to promote the sustainable reuse of material resources. To return your used device, please use the return and collection process or contact the retailer where the product was purchased. They can take this product for environmental safe recycling.

Refrigerator-freezer door install guidelines about swapping left&right

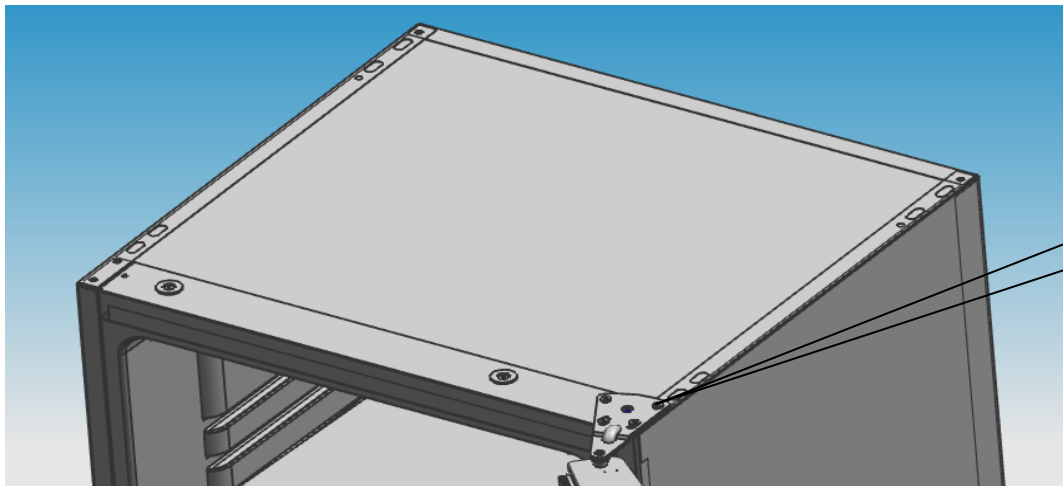
1. Remove the four screw caps and two catches with a flat-ended screwdriver. Then disassemble the screws top the fixed roof with a cross-ended screwdriver.





Catch (two)

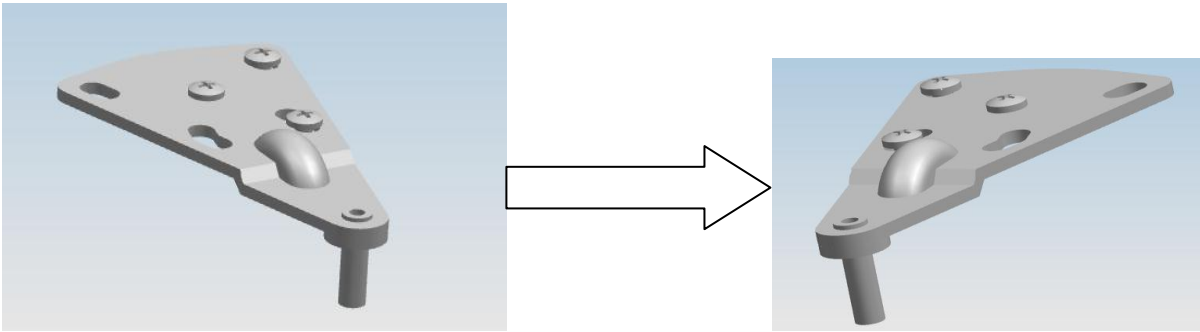
2、 Remove the screws fixed the top-hinge with cross-ended screwdriver.



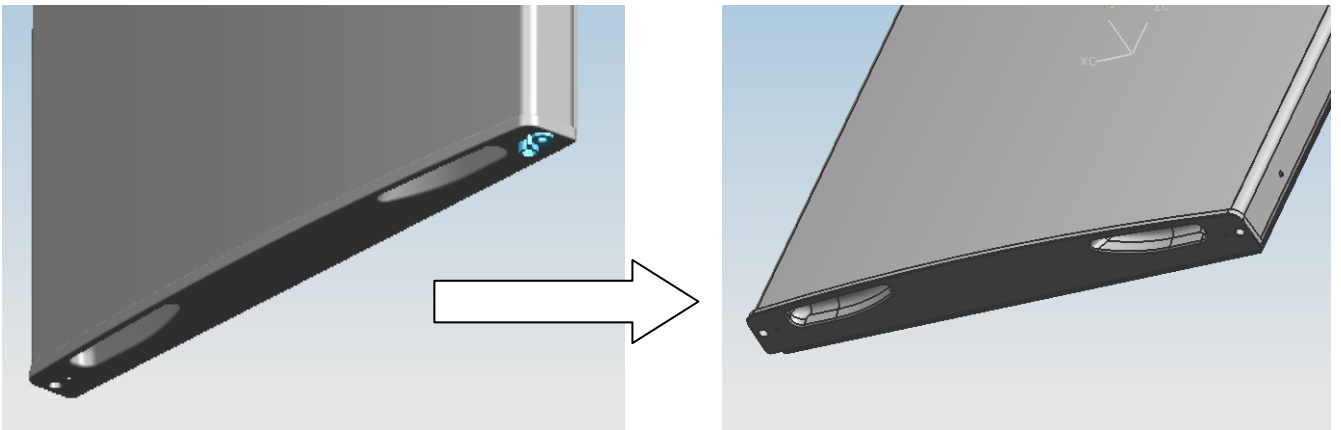
Screw (three)

3、Replace the top-hinge and the top-door limit block and the door bearing bush to the other side.

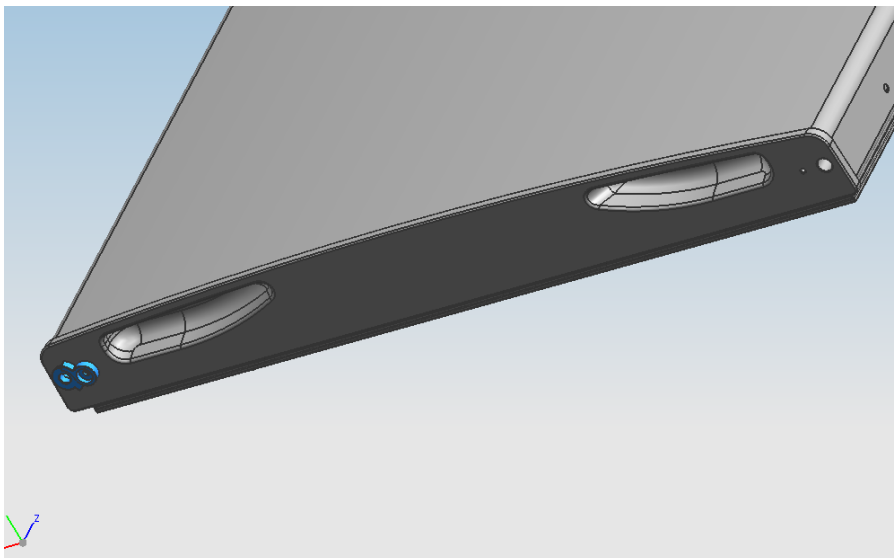
A. Remove the nut with sleeve. Take off the washer then remove the axes to the other side and fixed.



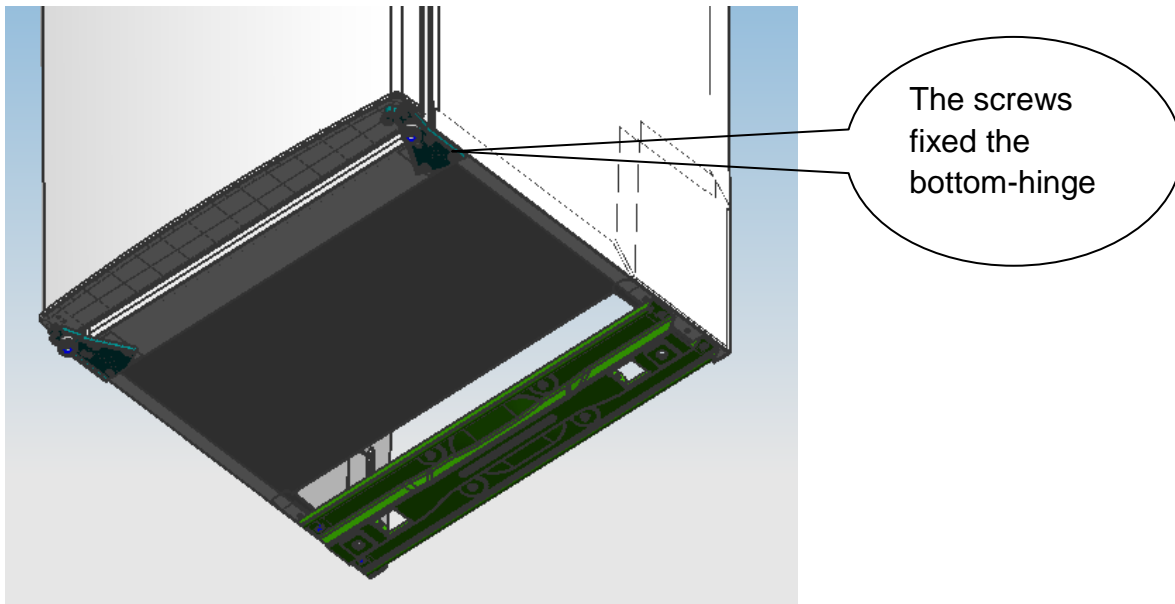
B. Remove the top door limit block



C. Please taking out the other door limit block with screw mounting to the door

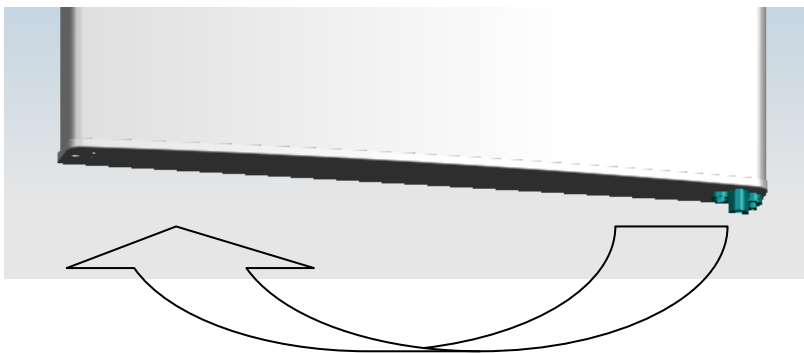


4、 Disassemble the screws fixed the bottom-hinge with cross-ended screwdriver

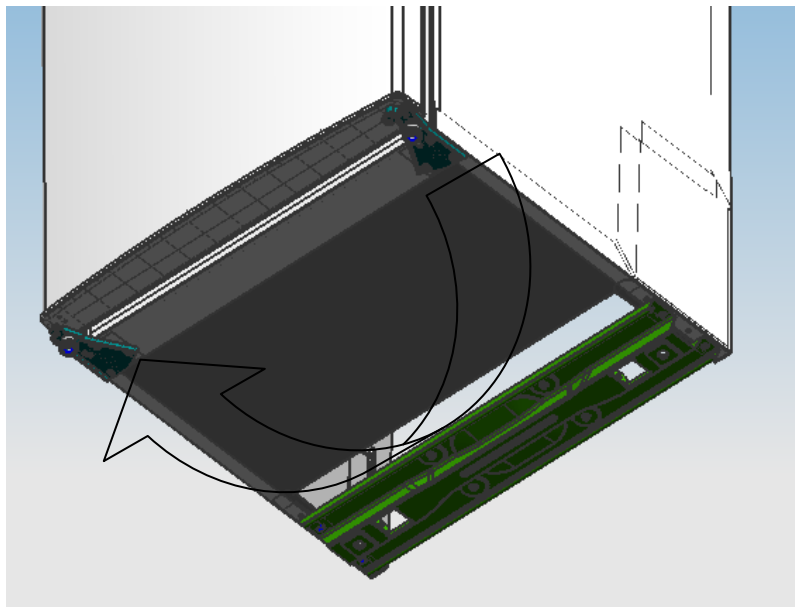


Note: the refrigerator-freezer incline angle less 45° .

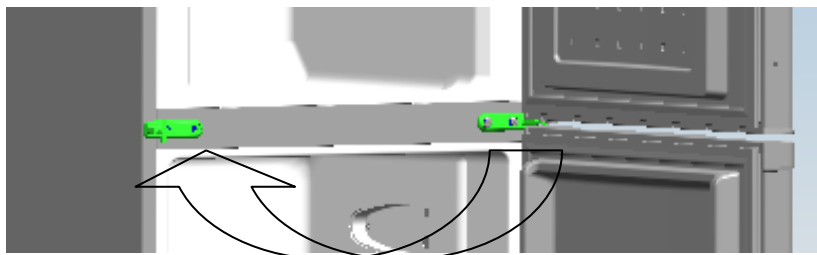
5、 Replace the bottom door bearing bush and the limit block



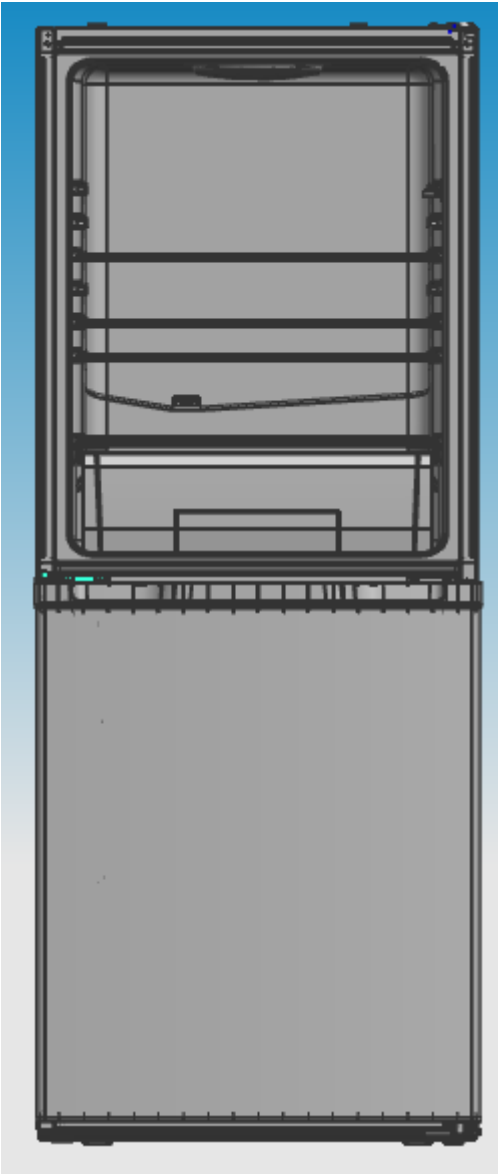
6、 Replace the bottom hinge to the other side then fix it with screws.



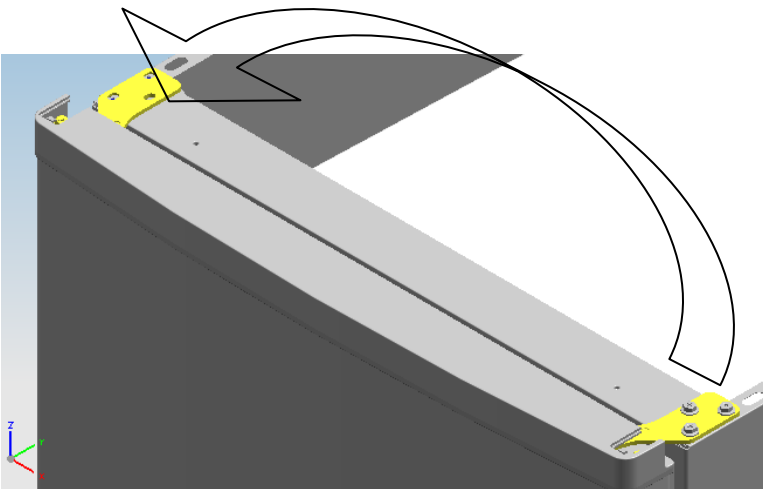
7、 replace the mid-hinge



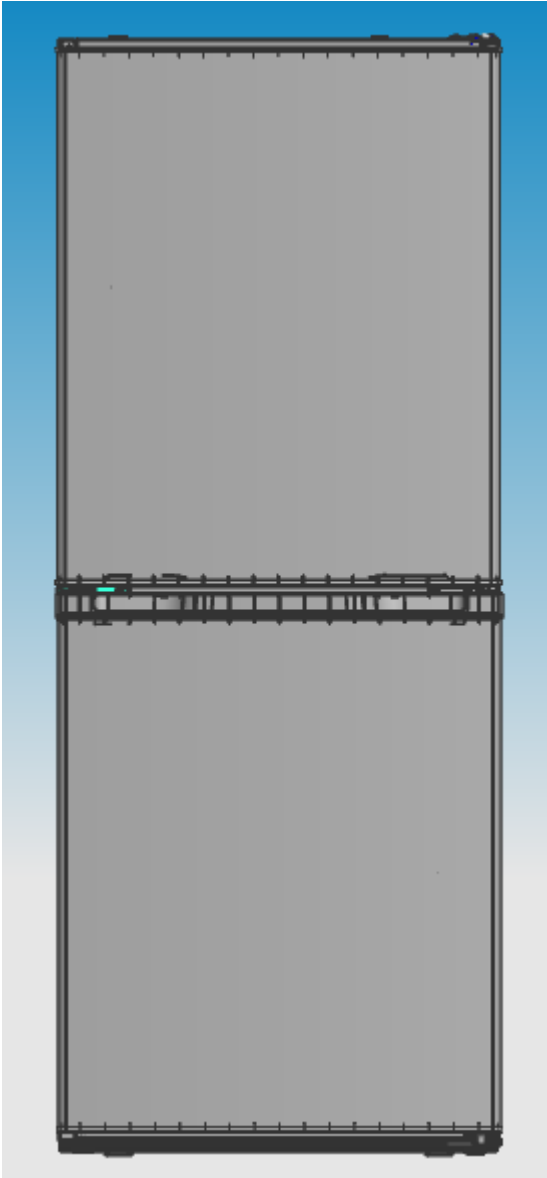
8、 Set the bottom door right position,fix the mid-hinge.



9、 replace the top-hinge



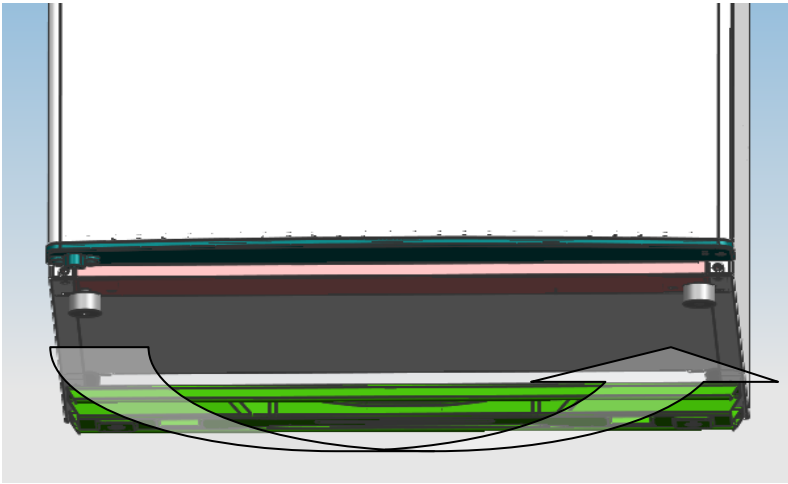
10、 Set the top door right position,fix the top-hinge and the cover.



11、 Install the four screw caps and two catches to corresponding position.

- Ensure the Appliance is unplugged and empty.
- Adjust the two leveling feet to their highest position.
- We recommend you have someone to assist you.

12、 Replace the leveler to the other side and adjust it to make sure the cabinet level.



NOTE:

To take the door off it is necessary to tilt the Appliance backward.

You should rest the Appliance on something solid e.g. a chair just below the top panel.

Do not lie the appliance completely flat as this may damage the coolant system.

Energy Saving Tips

- The appliance should be located in the coolest area of the room, away from heat producing appliances or heating ducts, and out of the direct sunlight.
- Let hot foods cool to room temperature before placing in the appliance. Overloading the appliance forces the compressor to run longer. Foods that freeze too slowly may lose quality, or spoil.
- Be sure to wrap foods properly, and wipe containers dry before placing them in the appliance. This cuts down on frost build-up inside the appliance.
- Appliance storage bin should not be lined with aluminum foil, wax paper, or paper toweling. Liners interfere with cold air circulation, making the appliance less efficient.
- Organize and label food to reduce door openings and extended searches. Remove as many items as needed at one time, and close the door as soon as possible.