




INSTRUCTION MANUAL

**UPRIGHT FREEZER**

**T55F2W**

# I. SAFETY INSTRUCTIONS

 **WARNING:** It is hazardous for anyone other than authorised service personnel to carry out servicing or repairs which involves the removal of covers. To avoid the risk of an electric shock, do not attempt to repair this appliance yourself.



**WARNING:** Risk of fire / flammable materials.

## Safety Warnings and Information

**WARNING:** Do not use electrical appliances such as a hair dryer or heater to defrost your Freezer.

**WARNING:** Containers with flammable gases or liquids can leak at low temperatures.

**WARNING:** Do not store any containers with flammable materials, such as spray cans, fire extinguisher, refill cartridges etc. in the Freezer.

**WARNING:** Do not place carbonated or fizzy drinks in the Freezer compartment. Ice lollies can cause "Frost/Freeze burns" if consumed straight from the Freezer.

**WARNING:** Do not remove items from the Freezer compartment if your hands are damp/wet, as this could cause skin abrasions or "Frost/Freezer burns". Bottles and cans must not be placed in the Freezer compartment as they can burst when the contents freeze.

**WARNING:** Manufacturer's recommended storage times should be adhered to. Refer to relevant instructions.

**WARNING:** Do not allow children to tamper with the controls or play with the appliance.

**IMPORTANT:** The appliance is heavy. Care should be taken when moving it. It is dangerous to alter the specification or attempt to modify this product in any way.

**WARNING:** Do not store flammable gases or liquids inside your Freezer.

**IMPORTANT:** If the power cable is damaged, it must be replaced by the manufacturer, its service agent or similarly qualified persons in order to avoid a hazard.

**WARNING:** This appliance can be used by children aged from 8 years and above and persons with reduced physical, sensory or mental capabilities or lack of experience and knowledge, if they have been given supervision or instruction concerning use of the appliance in a safe way and understand the hazards involved. Children shall not play with the appliance. Cleaning and user maintenance shall not be made by children without supervision.

**IMPORTANT:** This appliance is intended to be used in household and similar applications such as

- staff kitchen areas in shops, offices and other working environments,
  - farm houses and by clients in hotels, motels and other residential type environments,
  - bed and breakfast type environments,
  - catering and similar non-retail applications.
- Keep ventilation openings, in the appliance enclosure or in the built-in structure, clear of obstruction.
  - Do not use mechanical devices or other means to accelerate the defrosting process, other than those recommended by the manufacturer.
  - Do not damage the refrigerant circuit.
  - Do not use electrical appliances inside the food storage compartments of the appliance,

unless they are recommended by the manufacturer.

- Do not store explosive substances such as aerosol cans with a flammable propellant in this appliance.
- This appliance is not intended for use by persons (including children) with reduced physical, sensory or mental capabilities, or lack of experience and knowledge, unless they have been given supervision or instruction concerning use of the appliance by a person responsible for their safety. Children should be supervised to ensure that they do not play with the appliance.

**IMPORTANT:** Keep ventilation openings in the appliance enclosure or in the built-in structure, clear of obstruction.

**WARNING:** Do not use mechanical devices or other means to accelerate the defrosting process, other than those recommended by the manufacturer.

**WARNING:** Do not damage the refrigerant circuit.

**WARNING:** Do not use electrical appliances inside the food storage compartments of the appliance, unless they are of the type recommended by the manufacturer.

**WARNING:** Refrigerating appliances, in particular a refrigerator-freezer, might not operate consistently (possibility of defrosting of contents or temperature becoming too warm in the frozen food compartment), when appliance is running for an extended period of time, below the cold end of the range of temperatures for which the refrigerating appliance is designed.

**WARNING:** It is necessary that, for doors or lids fitted with locks and keys, the keys be kept out of the reach of children and not in the vicinity of the refrigerating appliance, in order to prevent children from being locked inside.

**WARNING:** The refrigerant used in your appliance and insulation materials requires special disposal procedures.

**WARNING:** When positioning the appliance, ensure the supply cord is not trapped or damaged.

**WARNING:** Do not locate multiple portable socket-outlets or portable power supplies at the rear of the appliance

Children aged from 3 to 8 years are allowed to load and unload refrigerating appliances.




To avoid contamination of food, please adhere to the following instructions:

- Opening the door for long periods can cause a significant increase of the temperature in the compartments of the appliance.
- Clean regularly surfaces that can come in contact with food and have accessible drainage systems.
- Clean water tanks if they have not been used for 48 hours, flush the water system connected to a water supply if water has not been used for 5 days.
- Store raw meat and fish in suitable containers in the refrigerator, so that it is not in contact with or drip onto other food.
- Two-star frozen food compartments are suitable for storing pre-frozen food, storing or making ice-cream and making ice cubes.
- One, two and three-star compartments are not suitable for the freezing of fresh food.
- If the refrigerating appliance is left empty for long periods of time, switch off, defrost, clean, dry, and leave the door open to prevent mould developing within the appliance.

## Electrical Supply Connection

- Connect the appliance to the electrical supply (220-240 V ~ 50 Hz) with the plug and lead, which are fitted.
- Connections to the mains supply should be in accordance with local regulations.
- DO NOT use plug adapter.
- The appliance must be plugged into an earthed socket
- Always make sure that the plug is accessible after the appliance has been positioned.
- If the electrical cable is damaged or worn, turn off the refrigerator and consult an authorised agent for replacement.

## Electrical Safety

- ⚡  **WARNING:** When positioning the appliance, ensure the supply cord is not trapped or damaged.
- ⚡  **WARNING:** DO NOT locate multiple portable socket- outlets or portable power supplies at the rear of the appliance  
DO NOT use plug adapter.
- ⚡  **WARNING:** Risk of fire / flammable materials

- The plug must be accessible after installation.
- The operating voltage for your appliance is 220-240 V at 50Hz.
- Connections to the mains supply should be in accordance with local regulations.
- Insert the plug into a socket with an efficient ground connection. If the socket has no ground contact or the plug does not match, we recommend you consult a qualified electrician for assistance.
- The appliance must be connected with a properly installed fused socket. The power supply (AC) and voltage at the operating point must match with the details on the name plate of the appliance (the name plate is located on the inside left of the appliance).
- The appliance must be plugged into an earthed socket.
- The plug MUST be accessible after the appliance has been positioned. The cord should be secured and not left exposed or dangling to prevent accidental injury.
- The appliance is supplied with a standard three-pin plug, of which the one for grounding should never be removed.
- Hold the plug, not the electrical cable, when unplugging the appliance.
- Make sure that the appliance does not trap the electric cable.
- DO NOT step on the cable.
- Avoid damage to the electric cable when moving the appliance.
- This refrigerator appliance is not designed to be used with an inverter.

DO NOT use an extension cord with this appliance. If the power cord is too short, have a qualified electrician or service technician install an outlet near the appliance. Use of an extension cord can negatively affect the performance of the unit.

**WARNING:** Improper use of the grounded plug can result in the risk of electrical shock. If the power cord is damaged, have it replaced by an authorised service provider.

## Climate Range

The information about the climate range of the appliance is provided on the rated plate. It indicates at which ambient temperature (that is, the room temperature in which the appliance is working) the operation of the appliance is optimal (proper).

Climate range	Permissible ambient temperature
SN	from +10°C to +32°C
N	from +16°C to +32°C
ST	from +16°C to +38°C
T	from +16°C to +43°C

Note: Given the limit values of the ambient temperature range for the climate classes for which the refrigerating appliance is designed, and the fact that the internal temperatures could be affected by such factors as location of the refrigerating appliance, ambient temperature and the frequency of door opening, the setting of any temperature control device might have to be varied to allow for these factors, if appropriate.

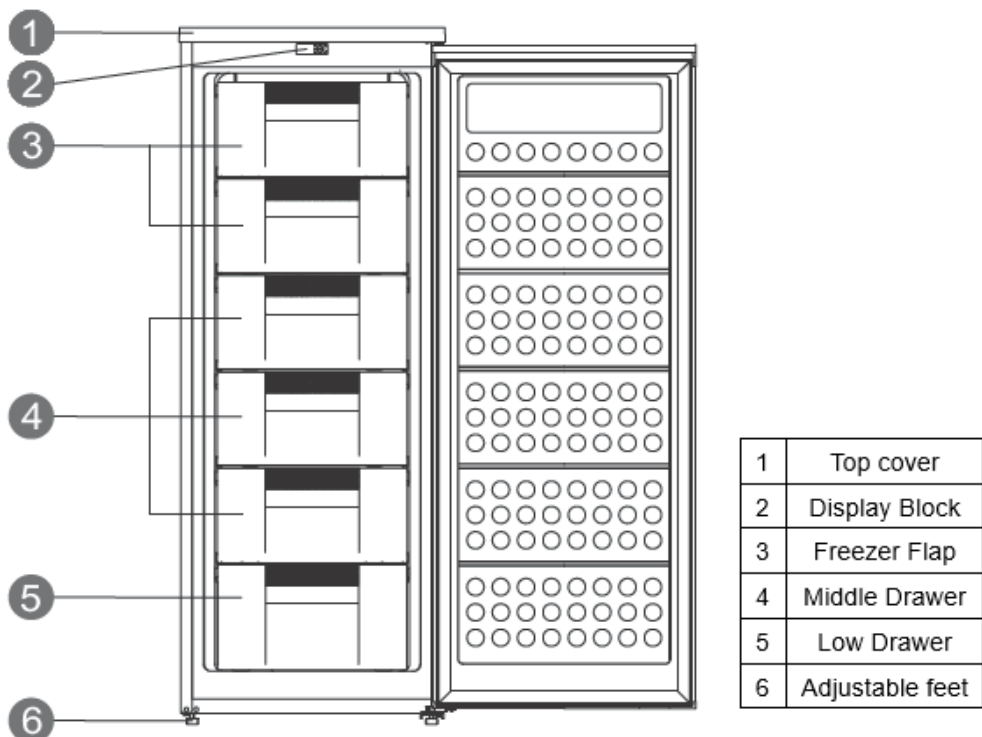
## Freon-free

The freon-free refrigerant (R600a) and the foaming insulation material (cyclopentane) are used for this refrigerator and are environmentally friendly, causing no damage to the ozone layer and having very small impact on global warming. R600a is flammable, and sealed in a refrigeration system, without leakage during normal use. In the case of refrigerant leakage due to the refrigerant circuit being damaged, be sure to keep the appliance away from open flames and open the windows for ventilation as quickly as possible.

## II. Introduction

### Upright Freezer Diagram

Note: Due to technological innovation, the product descriptions in this manual may not be completely consistent with your refrigerator. Details are in accordance with the real product.





### III. Preparations for use

#### Installation location:

##### 1. Ventilation condition

When installing your freezer ensure it is in a well ventilated location. Do not install the freezer near any heat source such as a cooker. Avoid locating the freezer in direct sunlight, this will ensure you reduce the energy consumption of the appliance. Do not locate the freezer in a damp place, this will prevent the freezer from rusting and leaking electricity. The result of the total space of the room in which the freezer is installed being divided by the freezer charge amount of the freezer shall not be less than 8 g/ M3. Note: The amount of refrigerant charged for the freezer can be found on the nameplate.

##### 2. Heat dissipation space

When your freezer is installed and running, it will give off heat to it's surroundings. Therefore, a minimum of 300mm free space should be at the top of the unit, minimum of 100mm on both sides, and a minimum of 50mm at the back of the refrigerator.

Dimensions in mm:

W	D	H	A	B	C(°)	E	F
1428	545	566	1011	1107	125	50	100

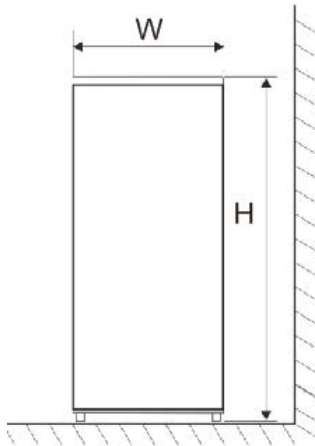


Fig. 1

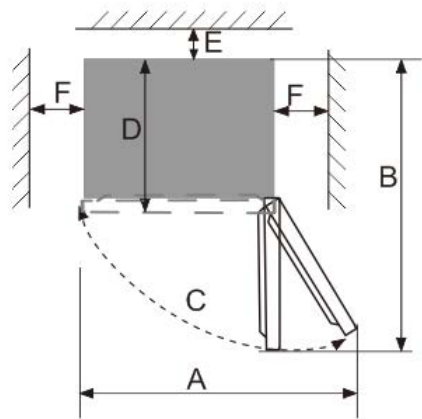


Fig. 2

Note: Figure 1, Figure 2 only illustrate the space demand of the product.



### 3. Level ground

Place the freezer on a solid and flat ground (floor) to keep it stable, or else it will give rise to vibration and noise.



Unobstructed ventilation shall be maintained around the appliance or in an embedded structure.

## Preparations for use

### 1. Standing time

After the larder is properly installed and well cleaned, do not switch it on immediately. Make sure you allow a minimum of 4 hours before turning on the power of the freezer.

### 2. Cleaning

Before use ensure you clean the internal compartments and all shelves and accessories with a soft cloth.

### 3. Power-on

Insert the plug into the power socket to start the compressor. After 1 hour, open the freezer door, if the temperature inside the larder compartment drops obviously, it indicates the refrigeration system is working normally.

### 4. Storage of food

After the freezer runs for a period of time, the internal temperature of the freezer will be automatically controlled according to the user's temperature setting. Before storing foods in your Freezer, turn the Freezer on and wait for 24 hours, to make sure it is working properly and to allow the Freezer to reach the correct temperature

(Try to open the freezer door as less as possible before the internal temperature cools down).

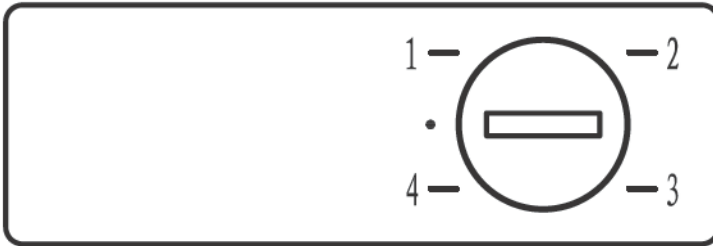
If the freezer is installed in a moisture filled room, make sure to check whether the ground wire and leakage circuit breaker are normal. If vibration noises are produced due to the freezer making contact with the wall, or if the wall gets blackened by air convection around the compressor, move the larder away from the wall. Setting up the larder may cause jamming noise or image chaos to mobile phones, fixed-line telephone, radio receiver, television sets surrounding it, so try to keep the refrigerator as far away as possible from these items.

## IV. Functions

The temperature thermostat knob needs to be turned by a coin. This is located near the top of the inside of the unit.

### Temperature Selection

- Turning the thermostat knob adjusts the temperature of the freezer.
- The marks on the knob represent different settings. Setting "1" is the warmest and setting "4" is the coolest.
- The factory recommended setting is "2" for normal operating conditions.



Internal temperature of the appliance can vary based on ambient temperature, the quantity of items stored and how frequently the door is opened.

## V. Instructions for food storage

### Precautions for use

- The appliance might not operate consistently (if there is a possibility of defrosting or temperature becoming too warm in the frozen food compartment) when running for an extended period of time below the cold limit of the temperature range for which the refrigerating appliance is designed
- The information of climate type of the appliance is provided on the rating plate.
- The internal temperature could be affected by such factors as, the location of the appliance, ambient temperature, and frequency of door being opened, etc., and if appropriate, the setting of any temperature control device might have to be varied to allow for these factors should be made.
- Effervescent drinks should not be stored in the freezer compartment or the low-temperature compartment, and some products such as water ices should not be consumed too cold.

### Food storage Tips and Hints

Food should be wrapped in aluminum foil, or some other type of airtight packing.

Do not allow frozen food in freezer to touch foods just placed into freezer. It can damage the food.

Frozen foods from the store should be placed in the freezer promptly, so they do not thaw.

Never place fresh vegetables and fruits into the freezer as they can get freezer burn.

### Cautions for food storage

For recommended food storage time, refer to the information given on your food packaging.

## Categorised storage of foods

Foods should be stored by category, with the foods you eat every day placed in front of the shelf, so that the door open duration can be shortened and food spoilage due to expiration can be avoided

Energy-saving tips: Allow hot food to cool down to the room temperature before putting it in the freezer. Put the frozen food in a fresh food compartment in a refrigerator to thaw, using the low temperature of the frozen food to cool the fresh food, thus saving energy.

## Moving your Larder/Fridge/Freezer

- **Location**

Do not place your freezer near a heat source, e.g. cooker, boiler or radiator. Avoid it from direct sunlight in out-buildings or sun lounges.

- **Leveling**

Make sure to level your freezer using the front leveling feet. If not level, the larder door gasket and sealing performance will be affected, or it may lead to the operating failure of your freezer.

After locating the freezer in position, wait for 4 hours before using it, to allow the refrigerant to settle.

- **Installation**

Do not cover or block the vents or grills of your appliance.

NOTE:

- If the appliance will not be used for several months, turn it off first, and then unplug the plug from the wall outlet.
- Take out all food.
- Clean and dry the interior thoroughly. To prevent odor and mold growth, leave the door ajar.
- Keep the cleaned appliance in a dry, ventilated place and away from the heat source, and do not place heavy objects on top of it.
- The unit should not be accessible to children's play.

## VI. Maintenance and cleaning



Before cleaning, turn off power first then unplug the appliance from the wall socket. Do not plug in or pull plug out with wet hands, because there is a risk of electric shock and injury.  
Do not spill water directly on the freezer, to avoid rust, electricity leakage and accidents.  
Do not stretch your hands into the bottom of the freezer you might be scratched by sharp metal corners.

### Internal Cleaning and External Cleaning

Use standard furniture polish to clean the Freezer exterior. Make sure that the doors are closed to prevent polish getting on the magnetic door seal or inside.

The grille of the condenser at the back of the Freezer and the adjacent components can be vacuumed using a soft brush attachment.

After defrosting you should clean the Freezer internally with a weak solution of bicarbonate of soda. Then rinse with warm water using a damp sponge or cloth and wipe dry. Wash the baskets in warm soapy water and ensure they are completely dry before replacing in the Freezer.



Do not use bristle brushes, steel wire brushes, detergent, soap powder, alkaline detergent, benzene, gasoline, acid, hot water and other corrosive or soluble items to clean the cabinet surface, door gasket, plastic decorative parts, etc, to avoid damage.

- Try to open the freezer door as less as possible, to ensure food is kept at the desired temperature to avoid food spoilage or thawing.
- If you get the power outage notice in advance:
  - 1) Adjust the thermostat knob to the high mode an hour in advance, so that foods get fully frozen (Do not store new food during this time!). Restore the temperature mode to the original setting when power supply becomes normal in a timely manner.
  - 2) Once the freezer is powered on and in use, it is best to use the freezer continuously under normal circumstances to ensure not to affect the service life of the appliance.

### Servicing

This product should be serviced by an authorised engineer and only genuine spare parts should be used.

Under no circumstances should you attempt to repair the appliance yourself.

Repairs carried out by inexperienced persons may cause injury or serious malfunctioning. Contact your after sales support team for assistance.

## Defrosting

When the freezer operates for a long period of time, the surface of the evaporator and the drawers may become covered with a layer of white frost. This frost will reduce the energy efficiency of the unit, and make the freezer less effective. When this frost forms, it should be promptly removed.

When defrosting, unplug the freezer, and remove all items from the freezer. Either allow the frost to melt naturally from the warm air in the room, or carefully use a plastic scraper. Finally, wipe away any remaining ice and water, plug the freezer in, and return the food to the freezer.

**CAUTION:** Never use sharp tools to chip ice away.

**After defrosting** you should clean the Fridge/Freezer internally with a weak solution of bicarbonate of soda. Then rinse with warm water using a damp sponge or cloth and wipe dry. Wash the baskets in warm soapy water and ensure they are completely dry before replacing in the freezer.

## Changing the internal lamp

Before carrying out the bulb replacement always press and turn the thermostat control to dial to position "OFF", then disconnecting the mains supply.

- Hold and lift up the light bulb cover.
- Remove the old bulb by unscrewing it in an anti-clockwise direction.
- Replace with a new bulb (10W) by screwing it in a clockwise direction marking sure that it is secure in the bulb holder.
- Refit the light cover and re-connect your Fridge/Freezer to the mains supply and switch on.

## VII. Trouble Shooting

With regard to the following small faults, not every failure needs to be fixed by the technical service personnel, you can try to solve the problem by referring to the below.

### **Power cut:**

If the internal temperature of the Freezer compartment is  $-18^{\circ}\text{C}$  or less when the power returns, your food is safe. The food in your Freezer will remain frozen for approx 16 hours with the door closed. Do not open the Freezer door more than necessary.

### **The Freezer is exceptionally cold:**

You may have accidentally adjusted the thermostat control dial to a higher position.

### **The Freezer is exceptionally warm:**

The compressor may not be working. Turn the thermostat control dial to the maximum setting and wait a few minutes. If there is no humming noise, it is not working. Contact the local store where your purchase was made.

### **The Freezer is not working:**

Check it is plugged in and switched on. Check that the fuse in the plug has not blown. Plug In another appliance, such as a lamp, to see if the socket is working. The Freezer should be placed in a well ventilated room with an ambient temperature of between  $16^{\circ}\text{C}$  and  $38^{\circ}\text{C}$ . Leave the Freezer for 30 minutes.

### **Condensation appears on the outside of the Freezer:**

This may be due to a change in the room temperature. Wipe off any residue of moisture. If the problem continues contact the local store where your purchase was made.

### **Noises inside the Freezer:**

If you have not owned a Freezer before, you may notice that it makes some rather unusual noises. Most noises are perfectly normal; however you should be aware of them!

### **GURGLING, WHOOSHING:**

These noises are caused by the circulation of the refrigerant liquid in the cooling system. It has become more pronounced since the introduction of CFC free gases. This is not a fault and will not affect the performance of your Freezer.

### **HUMMING, PURRING OR PULSATING:**

This is the compressor motor working, as it pumps the refrigerant around the system.





Note: If the trouble shooting advice does not resolve your problem, do not attempt to disassemble or repair this appliance. Repairs carried out by an inexperienced person may cause injury or serious malfunctioning. Contact your after sales service provider. This product should be serviced by an authorised engineer with only genuine spare parts.

When the appliance is not in use for long periods, disconnect from the electricity supply, empty all foods and clean the appliance, leaving the door ajar to prevent unpleasant smells and mould.

## VIII. Certifications

### Electrical information

This electrical appliance must be grounded.

This product is equipped with a plug, which is suitable for all houses equipped with sockets meeting the current specifications.

If the fitted plug is not suitable for your socket outlets, it should be cut off and carefully disposed of by a qualified electrician. To avoid a possible shock hazard, do not insert the discarded plug into a socket.

This product complies the EEC directives.

## IX. Product Support

### Declaration of conformance to product standards

This appliance conforms to all relevant standards applicable to domestic appliances sold in the UK

### Disposal



This appliance/fitting is marked A according to the European directive 2012/19/EU on Waste Electrical - and Electronic Equipment (WEEE). By ensuring this product is disposed of correctly, you will help prevent potential negative consequences for the environment and human health, which could otherwise be caused by inappropriate waste handling of this product.

The symbol on the product, or on the documents accompanying the product, the crossed out wheeled bin symbol, indicates that this appliance/fitting may not be treated as household waste. Instead it shall be handed over to the applicable collection point for the recycling of electrical and electronic equipment. Disposal must be carried out in accordance with local environmental regulations for waste disposal.

For more detailed information about treatment, recovery and recycling of this product, please contact your local authority, your household waste disposal service or the retailer where you purchased the product.

Old fridges and freezers contain isolation material and refrigerant with CFC. Therefore, take care not to harm the environment when you are discarding your old fridges.

## Guarantee

---



Your Teknix appliance comes with a 2 year parts  
and labour guarantee

Please REGISTER your appliance online at

[www.teknixwarranty.co.uk](http://www.teknixwarranty.co.uk)



You also have the option to EXTEND YOUR  
WARRANTY To 5 years parts and labour

To register your appliance or extend your warranty

Please call 01759 487823

---

We, Teknix, undertake that if within 24 months of the date of purchase this appliance or any part thereof is proven to be defective by reason of mechanical or electrical failure we will at our discretion repair or replace the same free of any charge for labour, materials or carriage on condition that:

- The appliance has been correctly installed in accordance to manufacturers' instructions.
- The appliance has been used for normal domestic purposes only and in accordance with our operating instructions.
- The appliance has not been repaired, taken apart or tampered with by any person not authorised by us.
- All repair work under this guarantee must be undertaken by the organisation or its authorised agents
- Proof of purchase is available on request
- If we decide your appliance cannot be repaired, or is uneconomical to repair, we'll replace it with the same model. If that model is no longer available, we'll discuss an alternative settlement with you.
- We reserve the right to charge for the expense of a service call if no fault has been found with the appliance after we have inspected it.
- All claims must be arranged via a call to us on 01759 487893. Without pre-authorisation it may result in the cost of claim not being reimbursed.

This guarantee is in addition to your statutory and other legal rights

### Exclusions

- Damage resulting from transportation, improper use, or neglect.
- Appliance outside the United Kingdom.
- Consumer replaceable items including, but not limited to, batteries, light bulbs and other consumables.
- Cosmetic damage and/or non-functional parts, which do not affect the normal use of the product including for example cabinet, scratches and rust.
- Any loss suffered as a result of not being able to use the appliance or any loss other than the repair or the replacement cost of the product.
- Accidental or physical damage

